

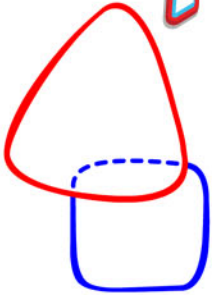


# HOW TO DRAW A BINWEEVIL



1

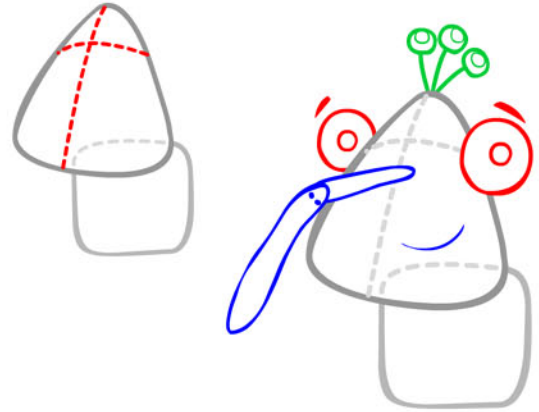
Bin Weevils come in all shapes and sizes. To start with, draw a triangle for the head, overlapping a square for the body.



Draw your lines lightly until you're finished. If you make a mistake, it's easier to rub out!

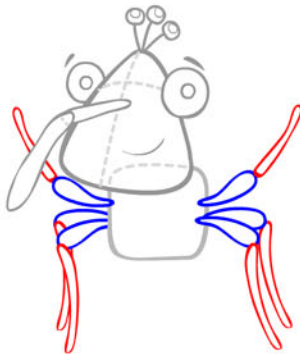
2

Now, draw a line down and across the middle of the head. This will help you draw the eyes and nose. For the nose draw two sausage shapes.



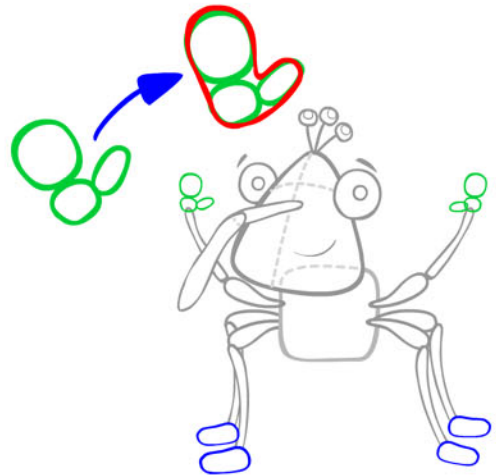
3

For the arms and legs, simply draw two sausage shapes. One short and fat, one long and thin!



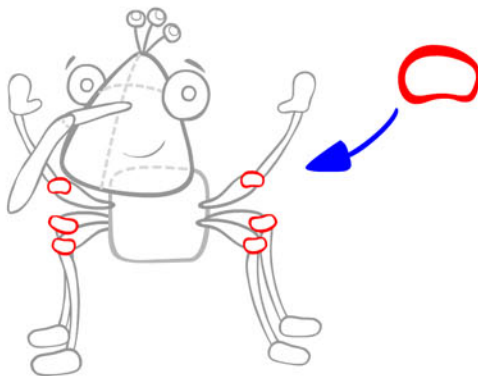
4

The hands are two circles and a sausage for the thumb. Draw an outline around the shapes to make the hand.



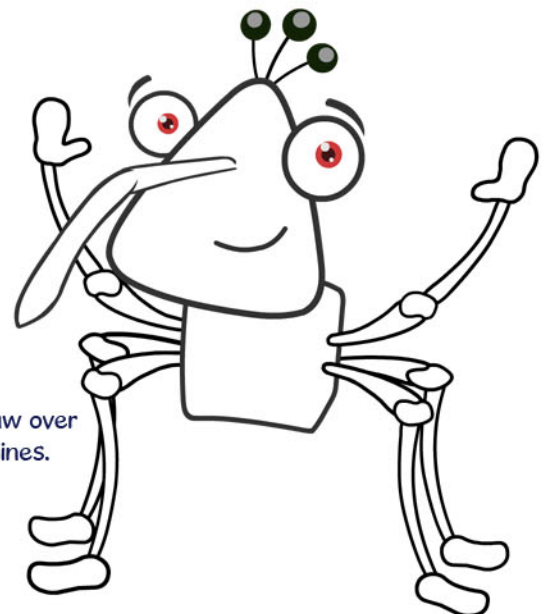
5

Next, draw six squashed circles. These are the elbows and knees of your Bin Weevil.



6

To finish your Bin Weevil, draw over your rough lines with darker lines.



Now you can draw this Bin Weevil, why not try drawing your own?